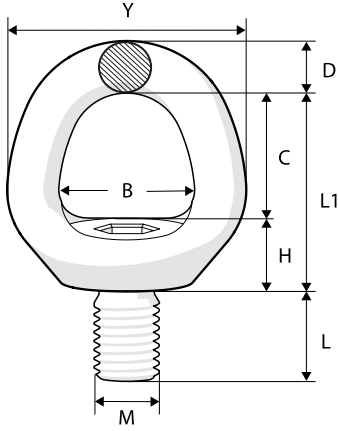


## REL P Fırdöndü Kaldırma Mapası



Art.No.	Model	Ölçüler (mm)								Ağırlık (kg)
		B	C	D	H	L	L1	M	Y	
2903 38 08	REL P-M8 x 1.25	28	28	11	14	15	42	8	50	0.2
2903 38 10	REL P-M10 x 1.5	28	28	11	14	15	42	10	50	0.2
2903 38 12	REL P-M12 x 1.75	32	33	13	13	20	47	12	58	0.3
2903 38 16	REL P-M16 x 2	39	41	15	16	24	57	16	70	0.5
2903 38 20	REL P-M20 x 2.5	42	43	16	18	30	60	20	78	0.7
2903 38 24	REL P-M24 x 3	50	51	19	20	36	71	24	88	1.1
2903 38 30	REL P-M30 x 3.5	60	62	26	28	45	90	30	112	2.4
2903 38 36	REL P-M36 x 4	72	72	32	32	54	104	36	136	4.1
2903 38 42	REL P-M42 x 4.5	82	82	38	37	63	119	42	158	6.7
2903 38 48	REL P-M48 x 5	94	96	43	39	72	135	48	180	9.9

Dar alan ✓  
 Limitli yükseklik ✓  
 Dikey kaldırma ✓  
 Tek noktadan kaldırma ✓

## REL P Çalışma Yük Limitleri

Simetrik yük (t)	1		2		2 simetrik		3-4 simetrik		Tork anahtarı	Allen anahtarı
	1	1	2	2	0 - 45°	45 - 60°	0 - 45°	45 - 60°		
REL P-M8 x 1.25	0.7	0.3	1.4	0.6	0.4	0.3	0.6	0.4	10 Nm	8 mm
REL P 5/16"-18 UNC	0.7	0.3	1.4	0.6	0.4	0.3	0.6	0.4	7 Ft.Lbs	5/16"
REL P-M10 x 1.5	1.2	0.5	2.4	1.0	0.7	0.5	1.0	0.7	15 Nm	8 mm
REL P 3/8"-16 UNC	1.2	0.5	2.4	1.0	0.7	0.5	1.0	0.7	11 Ft.Lbs	5/16"
REL P-M12 x 1.75	2.0	0.8	4.0	1.6	1.1	0.8	1.6	1.2	27 Nm	8 mm
REL P 1/2"-13 UNC	2.0	0.8	4.0	1.6	1.1	0.8	1.6	1.2	20 Ft.Lbs	5/16"
REL P-M16 x 2	3.5	1.5	7.0	3.0	2.1	1.5	3.1	2.2	60 Nm	8 mm
REL P 5/8"-11 UNC	3.5	1.5	7.0	3.0	2.1	1.5	3.1	2.2	44 Ft.Lbs	5/16"
REL P-M20 x 2.5	6.1	2.4	12.2	4.8	3.3	2.4	5.0	3.6	90 Nm	8 mm
REL P 3/4"-10 UNC	5.0	2.3	10.0	4.6	3.1	2.3	4.8	3.4	66 Ft.Lbs	5/16"
REL P 7/8"-9 UNC	6.1	2.4	12.2	4.8	3.3	2.4	5.0	3.6	66 Ft.Lbs	5/16"
REL P-M24 x 3	8.1	3.3	16.2	6.6	4.6	3.3	6.9	4.9	135 Nm	19 mm
REL P 1"-8 UNC	8.1	3.3	16.2	6.6	4.6	3.3	6.9	4.9	100 Ft.Lbs	3/4"
REL P-M30 x 3.5	12.1	4.6	24.2	9.2	6.4	4.6	9.6	6.9	270 Nm	19 mm
REL P 1 1/4"-7 UNC	12.1	4.6	24.2	9.2	6.4	4.6	9.6	6.9	200 Ft.Lbs	3/4"
REL P-M36 x 4	16.1	7.1	32.2	14.2	9.9	7.1	14.9	10.6	320 Nm	19 mm
REL P 1 1/2"-6 UNC	16.1	7.1	32.2	14.2	9.9	7.1	14.9	10.6	236 Ft.Lbs	3/4"
REL P-M42 x 4.5	24	9.1	48	18.2	12.7	9.1	19.1	13.6	600 Nm	19 mm
REL P 1 3/4"-5 UNC	24	9.1	48	18.2	12.7	9.1	19.1	13.6	440 Ft.Lbs	3/4"
REL P-M48 x 5	32	12.1	64	24.2	16.9	12.1	25.4	18.1	800 Nm	19 mm
REL P 2"-4.5 UNC	32	12.1	64	24.2	16.9	12.1	25.4	18.1	590 Ft.Lbs	3/4"