



Features & benefits ↓

- Compact
- Usable in all positions
- Protected against ejection of the plunger
- Hollow saddle
 - Prevents damage to the plunger
 - Easy to replace with threaded or flat saddle

Standard supplied with ↓

- High Flow female coupler A 118
- Hollow saddle, with the exception of the HHJ 5 S 2.5, HHJ 12 S 5 and HHJ 12 S 15 cylinders

Available on request ↓

- Cylinders manufactured in conformity with customer specifications
- Collar thread
- Base mounting holes

Accessories ↓

- Saddles: threaded and flat saddles

Thread And Flat Saddles	page	99
Hydraulic Pumps	page	139
Hydraulic Hoses	page	166
Pressure Gauges	page	171



Hollow saddle

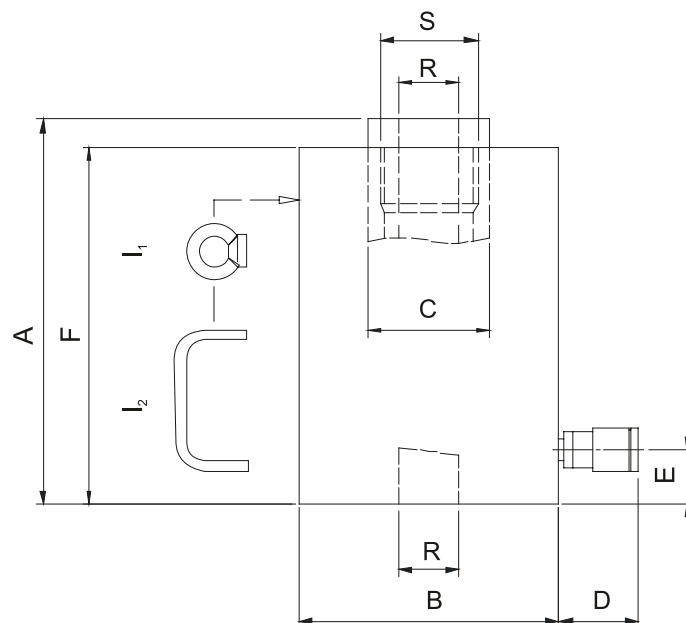


Hollow Plunger Cylinders - Spring Return


model	HHJ 5 S 2.5	HHJ 12 S 5	HHJ 12 S 15	HHJ 17 S 5	HHJ 20 S 5	HHJ 20 S 15
art no	100.111.002	100.111.021	100.111.029	100.112.023	100.112.033	100.112.030
max. working pressure	bar/Mpa 720 / 72	720 / 72	720 / 72	720 / 72	720 / 72	720 / 72
tonnage	t 5	12	12	17	20	20
stroke	mm 25	50	150	50	50	150
closed height	mm 87	156	298	192	182	389
capacity	kN/t 54.3 / 5.5	126.7 / 12.9	126.7 / 12.9	169.6 / 17.3	223.9 / 22.8	223.9 / 22.8
effective pressure area	cm ² 7.5	17.6	17.6	23.6	31.1	31.1
required oil content (effective)	cc 19	88	264	118	156	467
connection	A 118	A 118	A 118	A 118	A 118	A 118
cylinder type	hollow plunger	hollow plunger	hollow plunger	hollow plunger	hollow plunger	hollow plunger
acting type	single	single	single	single	single	single
return type	spring	spring	spring	spring	spring	spring
material	steel	steel	steel	steel	steel	steel
weight, ready for use	kg 1.9	6.3	11.0	7.3	8.6	18.0

Hollow Plunger Cylinders - Spring Return (dimensions)


model	HHJ 5 S 2.5	HHJ 12 S 5	HHJ 12 S 15	HHJ 17 S 5	HHJ 20 S 5	HHJ 20 S 15
dimension A	mm 87	156	298	192	182	389
dimension B	mm 60	86	86	90	100	100
dimension C	mm 28	40	40	46	50	50
dimension D	mm 90	90	90	90	90	90
dimension E	mm 24	27	27	31	31	31
dimension F	mm 87	156	298	178	170	377
dimension R	mm 17	21	21	27	27	27
dimension S	threadsize			M38x1,5	M38x1,5	M38x1,5
I type						I ₂



Hollow Plunger Cylinders - Spring Return


model	HHJ 30 S 7.5	HHJ 30 S 15	HHJ 45 S 15	HHJ 60 S 7.5	HHJ 110 S 7.5
art no	100.112.055	100.112.034	100.112.061	100.112.081	100.112.101
max. working pressure	bar/Mpa 720 / 72	720 / 72	720 / 72	720 / 72	720 / 72
tonnage	t 30	30	45	60	110
stroke	mm 75	150	150	75	75
closed height	mm 226	362	388	272	315
capacity	kN/t 293.7 / 29.9	293.7 / 29.9	453.5 / 46.2	610.4 / 62.2	1107.8 / 113
effective pressure area	cm ² 40.8	40.8	63	84.8	153.9
required oil content (effective)	cc 306	612	945	636	1155
connection	A 118	A 118	A 118	A 118	A 118
cylinder type	hollow plunger	hollow plunger	hollow plunger	hollow plunger	hollow plunger
acting type	single	single	single	single	single
return type	spring	spring	spring	spring	spring
material	steel	steel	steel	steel	steel
weight, ready for use	kg 15.0	25.0	35.5	34.5	78.3

Hollow Plunger Cylinders - Spring Return (dimensions)


model	HHJ 30 S 7.5	HHJ 30 S 15	HHJ 45 S 15	HHJ 60 S 7.5	HHJ 110 S 7.5
dimension A	mm 226	362	388	272	315
dimension B	mm 118	120	140	166	238
dimension C	mm 60	60	65	80	130
dimension D	mm 90	90	70	70	70
dimension E	mm 33	32	36	41	40
dimension F	mm 214	350	376	257	295
dimension R	mm 33	33	39	45	80
dimension S	threadsize M50x1,5	M50x1,5	M54x1,5	M65x1,5	M105x2
I type		I ₁	I ₂	I ₂	I ₁

